

ANNUAL REPORT

2015-2016





Corporate Details



IN THIS TOGETHER
parkinson's
QUEENSLAND



Our History

Parkinson's Queensland's origins began in 1982 when a group of multi-disciplinary professionals working with people with Parkinson's recognised that their clients needed more from their health care than what was being provided.

Contents

4	President's Report
5	CEO's Report
6	Who We Are
7	Parkinson's & Parkinson's Queensland
8	Highlights 2015 - 2016
9	Our Services
10	Our Community
12	Support Groups
14	Management Committee
15	Staff & Organisational Chart
16	Our Partnerships & Networks
17	Treasurer's Report
18	Auditor's Report & Financial Statements
33	Donations & Thank You
34	In Loving Memory
35	Support Us



Following initial discussions, the group consulted with the Parkinson's Society of New South Wales, and subsequently held a public seminar in 1983, to determine the level of public support and if further action should be undertaken.



President's Report



"Here's to all volunteers, those dedicated people who believe in all work and no pay"
- Robert Orben

I dedicate our 2015-16 Annual Report to all our volunteers, whether they are members of our organisation, Support Group

attendees, carers, spouses, family or friends of People affected by Parkinson's. It is these people who keep our focus on "The Main Game". At all times, we need to strive to do better for all within the Parkinson's community. To our volunteers, on behalf of the Management Committee and Staff of Parkinson's Queensland Inc (PQI), I extend to you our grateful thanks and admiration.

There is no doubt the 2015-16 financial year was a challenge for us all. An important focus of the year has been to ensure that your organisation has a financially strong and sustainable footing. We are moving in the right direction with this. In so doing we have also strived to: 1) increase our service delivery to where it has the most impact; 2) rebuild our communications with members and stakeholders; and 3) further develop the all-important connections with our major funders, especially governments.

To ensure that we remain strong and sustainable (and in a position to positively impact our community into the future), we need to work at the highest possible professional standards of governance and operational rigor. During the year we have resolved several important challenges in this space. I am delighted to say we have met these head-on and been able to deal with them because of the professionalism of our Staff and your Management Committee.

The first of these challenges relates to a near catastrophic incident that caused interruption to our technology-delivery systems (including our internet, emails, and website). Steps were taken to invest in a sustainable resolution with external checks and balances to all our technological services. This issue significantly hampered the way our service delivery was being managed. Despite the difficult situation, I pleased to report that our Staff was able to continue to deliver all of our programs, information and services with little obvious disruption to the external observer. This was no mean feat, I can assure you. Even more pleasing was the fact that we not only met the required delivery of our government programs, we actually exceeded the expectations.

The second challenge related to the reporting and acquittal commitments to both federal and state government granting agencies. It became clear that, in the past, we have not been as diligent as we could have been in respect to these commitments. This shortcoming led to a Quality Review Audit of our federal grants. PQI Staff and the Management Committee worked tirelessly to address this critical aspect of our business. Thanks to this

hard work, the outcome of this audit was most favourable. This provides us with confidence that any opportunities for future grant funding will not be unduly impacted upon by history. Of the 18 criteria, which were under review, all but one was given a clean bill of health. The one exception was an issue with Police Checks in respect to volunteers and carers - we believe a solution can be readily found for this moving forward.

Compliance is the challenge of the 21st century. There are government regulations with which PQI must follow and activities we may have previously considered appropriate that are no longer so. I anticipate that there will, necessarily, be some additional changes ahead. While some of these may seem a little mundane, or even annoying (at face value) to our members, we have to accept the fact that if we want to generate funds from government sources, we must comply with the requirements that the government insists upon.

Moving forward our strategic direction will focus in four areas of Governance and Leadership: 1) Operational systems; 2) Collaboration; 3) Strategic Partnerships and 4) Maintaining Sustainability. To undertake these steps your Management Committee will need your ongoing support and participation. Some may involve changes to our constitution to enable us to operate more effectively.

I would like to take this opportunity to publically acknowledge the people who have served this year on your Management Committee. To Peter Silburn, Karen O'Maley, Paulette Montaigne, Madonna Brady and Ruth Coleman, thank you for your continued service to the Committee. I also thank Abi Kharkar and Lyn Healey for their service during the year. The commitment of all these folk to PQI has been quite remarkable.

I also whole-heartedly thank our wonderful PQI Staff for their exceptional work. To Mark, Brikena, Rachel, Colette, Melissa and our wonderful Volunteers, thank you all for your loyalty, commitment and passion for People affected by Parkinson's. As a small team you have achieved such a great deal in such a short time.

To our members, thank you for the faith and trust you have placed in me and your Management Committee to represent you and all People affected by Parkinson's in Queensland. It has been our honour to serve.

In closing, I am proud to say Parkinson's Queensland Inc is in a strong position at this point in time. We are now ready to build on these foundations. I really look forward to working with you towards a bright future in which we can build collaborations, support research and training, and develop programs that are outcomes driven to improve the lives of all Queenslanders who are impacted by Parkinson's.

Prof. George D Mellick
President

CEO's Report



The 2015-16 financial year has been one of considerable challenge but also opportunity for Parkinson's Queensland. I well remember my arrival at the previous annual general meeting in late November having been your CEO for barely four days. It was a day of concern; from our members for its peak association and its future direction and from

me. It was also the day when I clearly understood the passionate expressions of debate that took place that Parkinson's Queensland did in fact have a promising future; and that its members truly care.

It is said that 'change is good' but in some instances, change too quickly can have a destabilising effect. During the two months following the AGM, we had found ourselves with an entirely new Management Committee and had lost all of its existing staff, except for one brave soul, Brikena Mema, who decided to hang in and work to help build a new Parkinson's Queensland.

By April our team of two had grown to five with the appointments of Colette Whitecross (Members, Support Groups and Volunteers Officer), Rachel Jeffrey (Projects Coordinator), and part-time Marketing and Communications Coordinator, Melissa Hislop. With this core group of staff Parkinson's Queensland has been able to provide a new approach to engaging with our members and support groups as we work towards improving the lives of people affected by Parkinson's. It is with great humility that I thank our small band for all they have done in such a short time. It can be oftentimes too easy to dismiss staff effort as simply being, 'that's what they are paid to do'. They remained positive, calm and loyal to Parkinson's Queensland throughout a period when more experienced individuals would have given up.

It became clear to the Management Committee that Parkinson's Queensland needed to focus upon getting its house in order, and to communicate more with our stakeholders, before Parkinson's Queensland could move into the direction it needed; collaborative partnerships, research funding, fundraising and diversification of income, and to broaden its reach to the 17,000 plus diagnosed Parkinson's folk across Queensland. With these factors in mind we focussed our efforts on continuing and improving a sustainable level of delivery of service to members, support groups and grant-maker relationships. Parkinson's Queensland's need to meet its obligations to grant-makers including reporting and acquittals proved to be a significant challenge which, through face to face engagement, has been overcome and is now back in-line with its commitments.

During the period from March through until early June a near catastrophic failure of our systems, database, internet and email facilities gave staff and the Management Committee cause for concern. As a team, we worked through all of the issues while ensuring members and support groups continued to be well-served. A new service agreement was put in place with our ICT



advisors EDis365 to work through and re-establish our technological issues. This included a commitment by the Management Committee to invest in a new server for our systems, a progressive computer replacement program and a new, combined, membership and support group relationship database all of which will be in place during the 2016-17 term.

This has been an interesting period for all. But, it ended well and I am confident 2016-17 will be a period of strong growth and program support.

I thank the Management Committee under the leadership of Professor George Mellick, for its support, faith and commitment. It has been the glue that has held everyone and everything together.

Thank you for the opportunity to serve as your Chief Executive Officer.

Mark Hindle
Chief Executive Officer



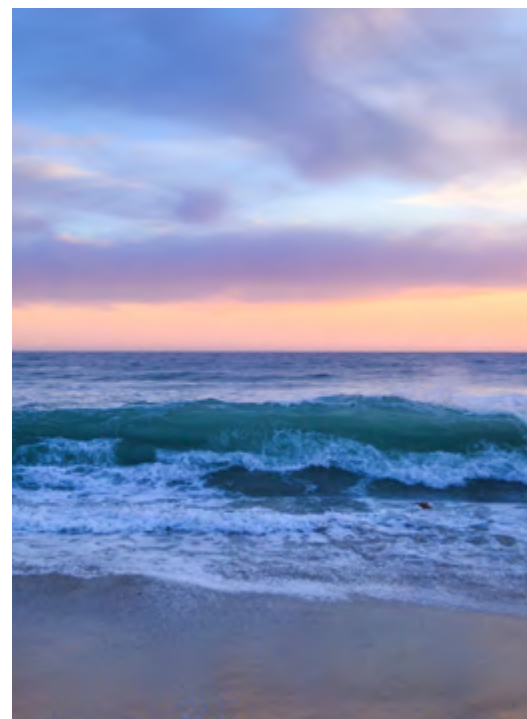
Our History

The first official meeting established the organisation in July 1984 as the Parkinson's Syndrome Society of Queensland, and the organisation was subsequently incorporated in July 1986.

The organisation changed its name to Parkinson's Queensland Incorporated (PQI) in May 1996 and adopted the internationally recognised Parkinson's flower, the Tulip, as part of its original multi-coloured branding.



Who We Are



PURPOSE

Advocate to raise awareness of the significant cost of Parkinson's in social and economic terms.

Build partnerships with relevant bodies to enhance our effectiveness.

Educate health professionals, politicians and the public about Parkinson's.

Fund and encourage research.

VISION

Queensland communities that are responsive to the needs of people with Parkinson's.

MISSION

To create an environment that is responsive to the needs of all people affected by Parkinson's.

VALUES

Caring
Collaborative
Integrity
Responsive

OBJECTIVES

Sustainability - To build a sustainable organisation to support our Parkinson's community and grow in a risk aware way.

Member Experiences - Create better experiences for people with Parkinson's.

Research & Education - Drive research into Parkinson's and education of the community towards a cure.

Relationships & Advocacy - Advance awareness and understanding of Parkinson's through improved representation and advocacy.

Parkinson's & Parkinson's Queensland

About Parkinson's Queensland

Since 1985, Parkinson's Queensland has helped thousands of Queenslanders in their journey with Parkinson's, not only in the early stages after diagnosis, but throughout the condition's progression.

Parkinson's Queensland is a charitable organisation that provides individuals, families and the health, aged and disability sectors with information, support and education. We also help fund research into a cure for Parkinson's and improved quality of life.

We provide an essential link between the community and support services to ensure those living with the day-to-day and long term challenge of Parkinson's can face the future with confidence and independence.

Support & Referral Services

Parkinson's Queensland provides information, education, encouragement and support to people living with Parkinson's disease, their families and carers. Our organisation works to create better awareness about the disease among health professionals and community workers as well as the general public.

Parkinson's Queensland also provides information sheets and other resources including a lending library addressing various aspects of the disease.

Parkinson's Queensland advocates to all levels of government for better services and treatments for people impacted by Parkinson's.

Parkinson's Queensland can assist with referral and access to various health professionals, services and networks.

Services Provided

Parkinson's Queensland is proud to provide the following services:

- Support and information for people with Parkinson's, their carers, family and friends
- A network of 42 Support Groups
- Printed literature on new medications and possible drug interactions
- The Parkinson's Queensland quarterly Connections magazine
- A library and resource centre with online catalogue and mail-out service
- Seminars for people with Parkinson's and their families
- Free call number (includes country callers) – 1800 644 189
- Educational services for health professionals and community groups
- Funding for and co-operation in local Parkinson's research
- Training and Education sessions at designated venues throughout the State (open to all persons, community, services,

About Parkinson's

Parkinson's is a progressive neurological condition that affects people from all walks of life. It is quite common, with approximately 80,000 Australians, including over 17,000 Queenslanders living with Parkinson's.

The average age of diagnosis is 65 years, however younger people can be diagnosed with Parkinson's too. This is referred to as Young Onset Parkinson's.

It is not easy to diagnose Parkinson's. There are no laboratory tests (such as a blood test or brain scan), so it is important that the diagnosis is made by a specialist, such as a neurologist. The specialist will examine for any physical signs of Parkinson's and take a detailed history of symptoms.

organisations, staff, residential/hostel care staff, allied health professionals, volunteers etc.)

- Referral (Incoming/Outgoing), advocacy and support.

Our Bona Fides

- An Incorporated Association (No. IA930) under the Associations Incorporation Act 1981 (Qld)
- Registered as a Charity (No. 998) under the Collection Act 1966 (Qld)
- Exempt from stamp duty under the Duties Act 2001 (Qld)
- An approved Deductible Gift Recipient (DGR) under the Income Tax Assessment Act 1997 (sections 30-15)
- A Health Promotion Charity endorsed for Income Tax and FBT exemptions and GST concessions, as detailed in the Australian Business Register entry for PQI (ABN 69 838 771 233).

Ambassadors

Neil and Sue Page.



Our History

In 1999, the first ever awareness concert event was held at Queensland University of Technology Concert Hall, titled "A Classical Afternoon," this annual concert event was continued until the mid-2000's.

Parkinson's Queensland employed two full time staff in 2002, these roles were that of Executive Officer and Administration Officer.



Highlights 2015 - 2016



1171

Calls via our 1800 free call number



1500

Office Volunteer hours contributed



5829

Support Group member attendances at meetings



418

Support Group meetings across Queensland



162

Health professional visits to Support Group meetings



3695

Connections Magazines distributed



198

Nurse phone enquiries



12

Parkinson's Awareness stands displayed in Queensland



1141

Members across Queensland



1000's

of lives made better because of you

Our Services



Seminars

Parkinson's Queensland regularly holds seminars throughout the State to provide information and education to health professionals, people with Parkinson's and the public.

Some of the seminars which have been held over the course of the 2015 - 2016 Financial Year include:

- Parkinson's Information Seminar - July 2015 - Cairns
- Parkinson's Information Seminar - August 2015 - Roma
- Parkinson's Information Seminar - November 2015 - Toowoomba

Pictured: Above, clockwise from left, attendees during Tai Chi demonstrations, Q & A sessions and staff at the event.



THE TULIP

The bright colour of the tulip emphasises hope and strength



Our History

Not only was the Tulip used as a symbol in the organisations logo, but the word itself was used to demonstrate the original value set outlined by Parkinson's QLD; Towards **Understanding & Learning** to **Improve** the lives of people with **Parkinson's**.

In 2004, Parkinson's Queensland had twenty-six Support Groups State wide.



World Parkinson's Day

On April 11th each year, the Parkinson's community seeks to raise awareness for Parkinson's by holding World Parkinson's Day. Community groups around the globe gather to showcase the need for support to improve the lives of 10 million people worldwide, who are living with Parkinson's.

Many of our support groups ran awareness stands or special events on this day to raise both awareness and morale for their groups.

The Hervey Bay Support Group ran a successful stall at Stockland Shopping Centre with over 20 enquiries from people who had been diagnosed with Parkinson's in the last three years. They received strong interest in joining their support group and received a visit on the day from local MP, Ted Sorensen.

The Young at Park Support Group held a social fundraiser, "BBQ and Bowls" event at Merthyr Bowls Club which was attended by CEO Mark Hindle and his wife Maureen, along with 52 others from our community. All who attended enjoyed the active day out including great company and lunch along the beautiful riverside setting.

Pictured:

Top: Hervey Bay Support Group Members; Barbara Robinson, Hans DeNiet, Ted Toms, Margueritte Donaldson and Jamie de Salis with Ted Sorensen MP.

Below: Some highlights from the Young at Park "BBQ and Bowls" event at Merthyr Bowls Club.



Community Engagement

There are many wonderful community groups that Parkinson's Queensland engages with on a regular basis, and which many of our members are heavily involved. Three examples of this are Radio Parkies, Dance for Parkinson's, and New Voice Choir.

Our very own Madonna Brady (*pictured, left*) broadcasts every week on Radio Parkies, representing Parkinson's QLD as 'DJ Madonna'; raising awareness and providing entertainment for people with Parkinson's.

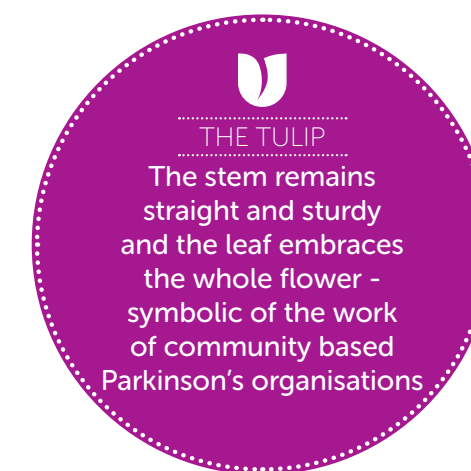
Many of our Parkinson's Queensland members are involved with the New Voice Choir (*pictured, right*) and take classes regularly for fitness and movement therapy with Dance for Parkinson's Australia (*pictured, far right*).



A Walk in the Park

The largest event on the Parkinson's Queensland calendar, A Walk in the Park attracts participants from all ages and walks of life. Everyone is welcome to be involved to whatever extent is suitable for them, be it a short or longer walk, or volunteering to assist on the day. Held on 31st August 2015, Parkinson's Queensland held walks in 7 locations across the State, which included Brisbane, Gold Coast, Cairns, Sunshine Coast, Townsville, Toowoomba and Gympie. We thank our major corporate partners; Banner Specialists, 4BC News Talk, Home Instead Senior Care, AbbVie, UCB Australia, Simplicity Funerals, and Medtronic. Unfortunately, in 2016 the Walk will be postponed following a review of the event and a desire to coordinate more fully with a national focused activity.

Below and right: photos from A Walk in the Park 2015



in this together



Some highlights from our Support Groups this financial year:

Top Row: Stephen & Robyn Duffield present cupcakes at Ipswich on World Parkinson's Day; Graham Whelband shows off some of his adult colouring artworks; Joy & some of the Caboolture group at the Caboolture Forum.

Bottom Row: Shireen Prasser from Centacare visiting Gympie, with Lenie Carswell who was celebrating her 70th Birthday; Ruth Coleman, Therese Ryan & Fay Muller take in the scenery at Charters Towers lookout on a Townsville group outing.

Support Groups

We are in this together, but we couldn't do it without you!

We thank Parkinson's Support Group Coordinators throughout Queensland who make such an important difference to so many people who are living with Parkinson's. Our support groups do amazing work; they play an essential role for those affected by Parkinson's.

Parkinson's support groups provide the opportunity to learn more about living with Parkinson's and to enjoy the company of others who share similar experiences, situations and challenges.

Parkinson's Support Groups operated in the following areas over the 2015-2016 Financial Year: we recognise the valuable contributions of the Support Group Coordinators who have volunteered in their area during this time.

Beenleigh Dianne Donaldson	Caloundra Dell Simpson Allan Voss Shirley Voss	Hervey Bay Jaimie De Salis Arnold Horne Barbara Robinson	Logan West Dorothy Hodder Fred Tunanu	Roma Nerida Caden
Beaudesert Carol Price	Dalby Lynda Watts	Hervey Bay Carer's Jaimie De Salis	Mackay Elizabeth Coppleman	Strathpine/Lawnton Jim Walker Patricia Walker
Biloela Bob Witten Sue Witten	DBS Neil Page Sue Page	Hervey Bay Craft Jaimie De Salis	Maryborough Gail Wixon	Tewantin/Noosa Derek Mason Valerie Mason
Bribie Island Angela Martin David Martin	Elanora Judy Learmonth	Indooroopilly Elaine West Sandra Hoare	Mitchelton Angela Martin David Martin	Tolga Matt Newport
Bundaberg Cherie Henderson	Geebung/Zillmere Angela Martin David Martin	Ipswich Paulette Montaigne	Nambour & District Beverley Johnston	Toowoomba Jan Barrett Ron Barrett
Burdekin Elvie Dickinson	Gladstone Pauline Newman	Kedron Pam Furner Peter Vidler	Parkinson's Plus Elise Tune	Townsville Ruth Coleman
Caboolture Joy Boyle Peter Fletcher Lorraine Orman	Granite Belt Graham Knight	South Burnett Maree Millard Carmen Strathdee	Redlands/Bayside Elley Alder Ray Edser Judy Edser Margaret Finegan	Whitsundays Peter Dorman Helen Elleksen
Cairns Elisabeth Daniels Gaylene Lynch Neil Lynch	Gympie Jodi Coyne	Lockyer Valley Lyndell Einam Jackie Powell	Rockhampton Thelma Neumann Marlene Schultz	Yeppoon Ron Gill Shaeleen Gill
	Helensvale Alan Farrell Carole Farrell	Logan Jenny Monaghan Wayne Monaghan		Young @ Park Madonna Brady

Parkinson's Queensland held its first ever Unity Walk in 2009.



Management Committee



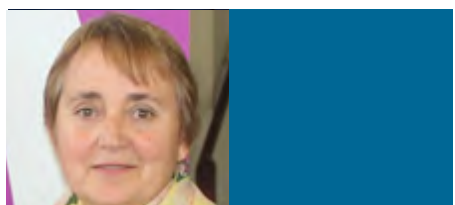
Professor George Mellick
President



Professor Peter Silburn AM
Vice President



Karen O'Maley RN
Treasurer



Paulette Montaigne
Secretary



Madonna Brady
Member



Ruth Coleman
Member

ELECTED MANAGEMENT COMMITTEE 2015 - 2016

Management Committee Role	Name	Status	Meetings	Attended
President	Prof. George Mellick	Current	6	6
Vice President	Prof. Peter Silburn AM	Current	6	3
Treasurer	Karen O'Maley RN	Current	6	6
Treasurer	Abhijit Kharkar	Resigned	2	1
Secretary	Paulette Montaigne	Current	6	6
Member	Madonna Brady	Current	6	6
Member	Ruth Coleman	Current	6	5
Member	Lyn Healey	Resigned	4	3

Parkinson's Queensland thanks the 2015 - 2016 Management Committee for their dedicated service to the organisation over the course of the past financial year. Your input and expertise has been highly valuable to the success of the organisation during this time of transition and change.

Staff & Organisational Chart



Mark Hindle
Chief Executive Officer



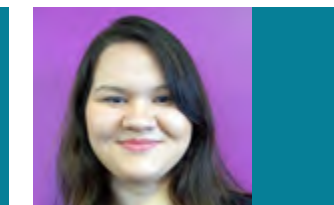
Brikena Mema
Business Services Officer



Colette Whitecross
Members, Support
Groups & Volunteers



Melissa Hislop
Marketing &
Communications



Rachel Jeffrey
Project Administration

THANK YOU

We acknowledge and pay tribute to our wonderful office Volunteers. Through their generosity of spirit and community mindedness they have contributed in excess of 1500 hours in the service of people with Parkinson's, their families and carers. The gift of their time has aided our mission to create an environment that is responsive to the needs of all people affected by Parkinson's.

For all their time, effort and hard work, we extend the thanks and appreciation of Parkinson's Queensland, its Management Committee and Staff. We are in this together but we couldn't do it without them.

If you would like to volunteer for PQI please let us know by calling us on 1800 644 189.



Our History

In 2013, our CEO and a Management Committee member represented Parkinson's Queensland as delegates at the World Parkinson's Congress in Montreal.

In 2014, the organisation adopted new purple, white and dark charcoal branding that we know today.



Our Partnerships & Networks

SPARK Neurocare Network

The SPARK NeuroCare Network is a network of not-for-profit organisations representing at least 35,000 adults and children living with progressive neurological and neuromuscular diseases in Queensland. As a founding member of SPARK NeuroCare, PQI has committed \$20,000 to a pilot program launch and the anticipated research components to that study.

During the 2015-16 financial year, the SPARK NeuroCare Network has been working formally together to deliver a joint state-wide innovative service delivery centre for people living with progressive neurological and neuromuscular diseases in Queensland.

In April 2016, Parkinson's Queensland attended an immersion event along with our partners in the SPARK NeuroCare Network at Brisbane Parliament House to strengthen the relationship between Parkinson's Queensland and State Parliament. Hon. Cameron Dick MP, Minister for Health, attended and proudly wore the Parkinson's Tulip badge, which is a symbol of strength and unity amongst the Parkinson's community. The Health Minister announced a grant of \$150,000 for the SPARK NeuroCare Network which will contribute toward the service delivery support centre in Townsville.

Along with Parkinson's Queensland, Alzheimer's Australia (QLD), Epilepsy Queensland Inc, Huntington's Queensland, Leukodystrophy Resource & Research Organisation Inc, Motor Neurone Disease Association of Queensland, MND and Me Foundation, MS Queensland, Muscular Dystrophy Queensland, and Youngcare are all involved in the partnership which makes up the SPARK Neurocare Network.

Make Parkinson's A Priority

In March 2016 at Federal Parliament House, Parkinson's Australia, alongside its State organisations, launched its Future Action Platform under the banner, "Make Parkinson's A Priority." The "Make Parkinson's A Priority" campaign aims to highlight to the wider community and the Government that people with Parkinson's, carers, family, friends and health professionals want better care and support and to slow, stop and ultimately cure the chronic, degenerative condition. Part of the call to the Government includes a request for funding and investment in research, services and to provide equitable access to Parkinson's Nurse Specialists, medications and therapies for all people living with Parkinson's in Australia. "Make Parkinson's A Priority" is supported by the 'Parliamentary Friends of Parkinson's' group, which is convened by Ann Sudmalis, MP.



Above: The Health Minister receives his Parkinson's Tulip badge; with Madonna Brady, Rod Anthonisz, Hon. Cameron Dick MP, Minister for Health, Prof. George Mellick and Melissa Hislop.



Above: Parkinson's Queensland President, Prof. George Mellick with Ann Sudmalis MP, Convenor of the Parliamentary Friends of Parkinson's Group, and Victor McConvey, Parkinson's Clinical Nurse Consultant - Health Team Manager, Parkinson's Victoria.

Treasurer's Report



It is a pleasure to present this report is the final report for the year ending 30 June 2016.

Following the 2015 AGM there has been much commentary, much ill-informed, and enquiry about the overall financial performance of

PQI in the past in relation to the present day. Much of that commentary related to the circumstances surrounding the 2014-15 and into the 2015-16 financial years.

Key points of note relating to the Parkinson's Queensland Inc (PQI) Balance Sheet are:

The current ratio is strong with \$4.06 held for every liability; Equity is strong with \$274,198 even after the extraordinary expenses. The picture within the Profit and Loss shows of a year of consolidation, restructure and a steadfast approach towards service delivery.

Income while sound is still reliant upon government grants and that reliance must be diversified and significantly increased as PQI moves forward. Increased funding will need to be sourced from fundraising, events, sponsorship, relationship building as well as philanthropic grant seeking. Bequest development will be a base platform as estates known to mature in the 2016-17 financial year.

Expenses were exceptionally high at \$675,745 largely due to extraordinary transactions relating to staff exits, recruitment and expenses related to claims, accounting and legal costs. It can be anticipated there will be significant increases in insurance in the coming year. Had these expenses not been necessary PQI's operating surplus would have been in excess of \$70,000 for the year. The deficit at \$42,804 has been reduced as a consequence of interest income, insurance recoveries as well as a Fair Work Australia claim.

The PQI Research Fund is strong with all funds held on term deposit with our bankers are considered safe and accessible to distribute on research related activities as the organisation moves forward.

Previously PQI, was a non-reporting entity, and as such was not required to publish the detail it does now. Also, until the 2014-15 financial year PQI's reporting was undertaken using another accounting system and

then PQI engaged the DKM Group as its accountants in the 2014-15 financial year. From then on the reporting systems improved dramatically.

It is especially important to note that previously all invested funds (discretionary or tied [i.e. research]) were consolidated into the one set of term deposit figures. That gave a skewed view of the organisation's operating performance. Once the DKM Group took over PQI's book keeping these were separated out into PQI and PQI Research Fund to reflect a more transparent position.

To clarify, the surplus for PQI in 2014 was \$4,265 and the Research Fund showed a surplus of \$9,043 which when consolidated in the same years on the basis of the previous five years would have been a surplus of \$22,878. In 2015 the same picture reflected PQI as a deficit of 127,820 and the Research Fund a surplus of \$2,320. However, in 2015-16 the deficit for PQI was \$42,801 and the Research Fund was in surplus \$117,808 providing a consolidated surplus of \$75,007 or a turn-around of \$194,081. This was achieved by operating within the terms of our grants, applying funds where required in respect to programs, information and educational materials. This was aided by a policy of retaining and building reserves in term deposits.

While comparisons are meaningless in the overall scheme this report enables present and future Management Committees to have a very clear picture of what has occurred while providing a strong platform for the future.

The report is commended to the Members for acceptance.

Karen O'Maley RN
Treasurer



Our History

In addition to the logo change in 2014, the name of the Unity Walk was changed to "A Walk in the Park," to reflect the new look of the branding in the logo.

Parkinson's Queensland recorded its 30th Year of service as an incorporated association in 2015.

Financial
Statements
for the year
ended
30 June 2016

CONTENTS

	PAGE
Independent Auditor's Report	1
Assets and Liabilities Statement	3
Income and Expenditure Statement	4
Notes to the Financial Statements	5
Detailed Balance Sheet – Operating	7
Detailed Profit & Loss – Operating	8
Detailed Balance Sheet – Research Fund	11
Detailed Profit & Loss – Research Fund	12
Certification Statement by Members of the Committee	13





**PARKINSON'S QUEENSLAND INC.
INDEPENDENT AUDITORS REPORT**

PRINCIPAL
THOMAS GEORGE CPA

CONSULTANT
JACOB GEORGE FCA

GEORGE & RIDGWAY

PUBLIC ACCOUNTANTS
Unit 2

45 Sanders Street
UPPER MT. GRAVATT QLD 4122
ABN: 70 737 895 284

P.O. Box 610
SUNNYBANK QLD 4109

Telephone (07) 38497677 Fax (07) 38497139
Email: jacobe@pqr.com.au

PARKINSON'S QUEENSLAND INCORPORATED
INDEPENDENT AUDIT REPORT TO THE MEMBERS OF
PARKINSON'S QUEENSLAND INCORPORATED

We have audited the accompanying financial report, being a special purpose report of Parkinson's Queensland Incorporated, which comprises the assets and liabilities statement as at 30th June 2016, the income and expenditure statement for the year then ended, notes comprising a summary of significant accounting policies and other explanatory information, and the certification by members of the committee on the annual statements giving true and fair view of the financial position and performance of the association.

Committee's Responsibility for the Financial Report

The committee of Parkinson's Queensland Incorporated is responsible for the preparation of the financial report, and has determined that the basis of preparation described in Note 1 is appropriate to meet the requirements of the Associations Incorporation Act (Qld) 1981 and is appropriate to meet the needs of the members. The committee's responsibility also includes such internal control as the committee determines is necessary to enable the preparation and fair presentation of a financial report that is free from material misstatement due to fraud or error.

Auditor's Responsibility

Our responsibility is to express an opinion on the financial report based on our audit. We have conducted our audit in accordance with Australian Auditing Standards. Those standards require that we comply with relevant ethical requirements relating to audit engagements and plan and perform the audit to obtain reasonable assurance whether the financial report is free from material misstatement.

An audit involves performing procedures to obtain audit evidence about the amounts and disclosures in the financial report. The procedures selected depend on the auditor's judgement, including the assessment of the risks of material misstatement of the financial report, whether due to fraud or error. In making those risk assessments, the auditor considers internal control relevant to the association's preparation and fair presentation of the financial report in order to design procedures that are appropriate in the circumstances, but not for the purpose of expressing an opinion on the effectiveness of the association's internal control. An audit also includes evaluating the appropriateness of accounting policies used and the reasonableness of accounting estimates made by the committee, as well as evaluating the overall presentation of the financial report.

We believe that the audit evidence we have obtained is sufficient and appropriate to provide a basis for our audit opinion.

Cont. / 2

**PARKINSON'S QUEENSLAND INC.
AUDITORS REPORT CONT.**

-2-

Opinion

In our opinion, the financial report presents fairly, in all material respects, the financial position of Parkinson's Queensland Incorporated as at 30th June 2016 and its financial performance for the year then ended in accordance with the accounting policies described in Note 1 to the financial statements, and the requirements of the Associations Incorporations Act (Qld) 1981.

Basis of Accounting

Without modifying our opinion, we draw attention to Note 1 to the financial report, which describes the basis of accounting. The financial report has been prepared to assist Parkinson's Queensland Incorporated to meet the requirements of the Associations Incorporations Act (Qld) 1981. As a result, the financial report may not be suitable for another purpose.

Without qualification to the opinion expressed above, attention is drawn to the following matters:-

Donations

The Management committee is responsible for meeting the statutory requirements regarding the collection and disbursement of donations.

THOMAS GEORGE

Dated this 22nd day of August 2016

GEORGE & RIDGWAY
PUBLIC ACCOUNTANTS
UNIT 2, 45 SANDERS STREET
UPPER MT GRAVATT Q 4122
PO BOX 610, SUNNYBANK Q 4109

Liability limited by a scheme approved under Professional Standards Legislation

Cont: 3



PARKINSON'S QUEENSLAND INC.
ASSETS & LIABILITIES STATEMENT

-3-

PARKINSON'S QUEENSLAND INCORPORATED		
ASSETS AND LIABILITIES STATEMENT		
FOR THE YEAR ENDED 30TH JUNE 2016		
2015		2016
	CURRENT ASSETS	
529,889	Cash at Bank	581,348
86	Cash on Hand	148
16,734	Accounts Receivable	2,890
2,667	Sundry Debtors	115
<u>549,376</u>	TOTAL CURRENT ASSETS	<u>584,501</u>
	NON CURRENT ASSETS	
50,750	Property, Plant and Equipment	32,104
17,185	Motor Vehicles	12,889
10,970	Other Assets	5,025
<u>78,905</u>	TOTAL NON CURRENT ASSETS	<u>50,018</u>
<u>628,281</u>	TOTAL ASSETS	<u>634,519</u>
	CURRENT LIABILITIES	
39,374	Trade Payables	5,330
54,182	Accrued Charges and Deferred Income	22,688
90,447	Other Creditors	87,219
<u>184,003</u>	TOTAL CURRENT LIABILITIES	<u>115,237</u>
<u>444,278</u>	NET ASSETS	<u>519,282</u>
	MEMBERS' FUNDS	
570,500	Opening Balance - Beginning of Year	444,278
-719	Prior Year Adjustment	0
-125,503	Surplus/(Deficit) for the Year	75,004
<u>444,278</u>	TOTAL MEMBERS' FUNDS	<u>519,282</u>

The accompanying notes form part of this financial report

GEORGE & RIDGWAY
PUBLIC ACCOUNTANTS
UNIT 2, 45 SANDERS STREET
UPPER MT GRAVATT Q 4122
PO BOX 610, SUNNYBANK Q 4109

Liability limited by a scheme approved under Professional Standards Legislation

Cont: 4

P. 4/10

PARKINSON'S QUEENSLAND INC.
INCOME & EXPENDITURE STATEMENT

-4-

PARKINSON'S QUEENSLAND INCORPORATED		
INCOME AND EXPENDITURE STATEMENT		
FOR THE YEAR ENDED 30TH JUNE 2016		
2015		2016
	INCOME	
550,749	Revenue	741,267
550,749	Gross Profit	741,267
(653,450)	Administration Fees	(648,345)
(22,802)	Depreciation	(17,918)
(125,503)	Surplus/(Deficit) Before Income Tax	75,004
(719)	Prior Year Adjustment	0
<u>(126,222)</u>	Surplus After Income Tax	<u>75,004</u>
<u>570,500</u>	Retained Surplus At The Beginning Of The Financial Year	<u>444,278</u>
<u>444,278</u>	Retained Surplus At The End Of The Financial Year	<u>519,282</u>

The accompanying notes form part of this financial report

GEORGE & RIDGWAY
PUBLIC ACCOUNTANTS
UNIT 2, 45 SANDERS STREET
UPPER MT GRAVATT Q 4122
PO BOX 610, SUNNYBANK Q 4109

Liability limited by a scheme approved under Professional Standards Legislation

Cont: 5

P. 4/10



PARKINSON'S QUEENSLAND INCORPORATED
NOTES TO THE FINANCIAL STATEMENTS
FOR THE YEAR ENDED 30 JUNE 2016

NOTE 1 – SUMMARY OF SIGNIFICANT ACCOUNTING POLICIES

This financial report is a special purpose financial report prepared in order to satisfy the financial reporting requirements of the Associations Incorporation Act 1981 (Qld). The committee has determined that the association is not a reporting entity.

The financial report has been prepared on an accruals basis and is based on historic costs and does not take into account changing money values, or except where specifically stated, current valuations of non-current assets.

The following significant accounting policies, which are consistent with the previous period unless otherwise stated, have been adopted in the preparation of this financial report.

(a) Income Tax

No provision for income tax has been raised as Parkinson's Queensland Incorporated operates solely as a non-profit association established for the provision of community services and accordingly it is exempt from income tax under section 50-45 of the Income Tax Assessment Act 1997.

(b) Property, Plant and Equipment (PPE)

Leasehold improvements and office equipment are carried at cost less, where applicable, any accumulated depreciation.

The depreciable amount of all PPE is depreciated over the useful lives of the assets to the association commencing from the time the asset is held ready for use.

Leasehold improvements are amortised over the shorter of either the unexpired period of the lease or the estimated useful lives of the improvements.

(c) Impairment of Assets

At the end of each reporting period, the entity reviews the carrying values of its tangible and intangible assets to determine whether there is any indication that those assets have been impaired. If such an indication exists, the recoverable amount of the asset, being the higher of the asset's fair value less costs to sell and value in use, is compared to the asset's carrying value. Any excess of the asset's carrying value over its recoverable amount is recognised in the income and expenditure statement.

(d) Employee Benefits

Provision is made for the association's liability for employee benefits arising from services rendered by employees to the end of the reporting period. Employee benefits have been measured at the amounts expected to be paid when the liability is settled.

(e) Cash and Cash Equivalents

Cash and cash equivalents includes cash on hand, deposits held at call with banks, and other short-term highly liquid investments with original maturities of three months or less.

PARKINSON'S QUEENSLAND INCORPORATED
NOTES TO THE FINANCIAL STATEMENTS
FOR THE YEAR ENDED 30 JUNE 2016

NOTE 1 – SUMMARY OF SIGNIFICANT ACCOUNTING POLICIES (CONT.)

(f) Revenue and Other Income

Revenue is measured at the fair value of the consideration received or receivable after taking into account any trade discounts and volume rebates allowed. For this purpose, deferred consideration is not discounted to present values when recognising revenue.

Interest revenue is recognised using the effective interest rate method, which for floating rate financial assets is the rate inherent in the instrument.

Grant and donation income is recognised when the entity obtains control over the funds, which is generally at the time of receipt.

All revenue is stated net of the amount of goods and services tax (GST).

(g) Good and Services Tax (GST)

Revenues, expenses and assets are recognised net of the amount of GST, except where the amount of GST incurred is not recoverable from the Australian Tax Office. In these circumstances the GST is recognised as part of the cost of acquisition of the asset or as part of an item of the expense. Receivables and payables in the Assets and Liabilities Statement are shown inclusive of GST.

GEORGE & RIDGWAY
PUBLIC ACCOUNTANTS
UNIT 2, 45 SANDERS STREET
UPPER MT GRAVATT Q 4122
PO BOX 610, SUNNYBANK Q 4109



PARKINSON'S QUEENSLAND INC.
BALANCE SHEET - OPERATING

-7-

Parkinson's Queensland Inc

Balance Sheet [Last Year Analysis]

June 2016

	This Year	Last Year
Assets		
Current Assets		
Bank Accounts		
Main Account - 11274719 - S21	20,922	25,985
Main - 11274719 - S26	1,494	77
Fund/R Account-11274727 - S21	3,421	1,648
Petty Cash/Cash On Hand	148	86
Web Donations - 11335440 - S21	1,322	1,322
Paypal (PQI)	700	3,580
Term Deposit - 11274719 - I3	0	333,626
Term Deposit - F90	272,000	0
Total Bank Accounts	300,005	365,304
Clearing Accounts		
Undeposited Funds Account	213	420
Loan - Research Account	(570)	0
Total Clearing Accounts	(357)	420
Other Current Assets		
Trade Debtors	2,890	18,734
Deposits Paid	0	200
Research Fund Admin Fees	310	2,047
Prepaid Expenses - Unity Walk	0	7,293
Prepaid Expenses - Seminars	0	3,677
Total Other Current Assets	3,200	29,951
Total Current Assets	302,849	396,675
Non-Current Assets		
Plant & Equipment		
Plant & Equipment at Cost	150,788	150,788
Plant & Equipment Accum Depn	(118,685)	(106,738)
Total Plant & Equipment	32,104	44,051
Motor Vehicles		
Motor Vehicles At Cost	25,021	25,021
Motor Vehicles Accum Depn	(12,132)	(7,836)
Total Motor Vehicles	12,889	17,185
Total Non-Current Assets	44,993	61,236
Total Assets	347,841	457,910
Liabilities		
Current Liabilities		
Trade Creditors	5,168	39,374
Credit Cards		
Heritage Business Visa - L52	1,287	4,067
Total Credit Cards	1,287	4,067
GST Liabilities		
GST Collected	6,570	10,087
GST Paid	(6,258)	(7,900)
Total GST Liabilities	312	2,187
Payroll Liabilities		
PAYG Withholding Payable	14,470	10,658
Superannuation Payable	8,879	6,725
Total Payroll Liabilities	21,349	17,383

Handwritten signature

PARKINSON'S QUEENSLAND INC.
BALANCE SHEET - OPERATING CONT.

-8-

Other Current Liabilities		
Provision - Annual Leave	5,696	29,281
Receipts In Advance-Membership	17,923	8,914
Receipts In Advance-Unity Walk	0	13,940
Receipts In Advance-Seminar	0	2,352
Grant Unexpended	21,809	23,409
Total Other Current Liabilities	45,528	77,897
Total Current Liabilities	73,643	140,908
Total Liabilities	73,643	140,908
Net Assets	274,198	317,002
Equity		
Retained Earnings	317,002	444,824
Current Year Surplus/Deficit	(42,804)	(127,821)
Total Equity	274,198	317,002

Handwritten signature



PARKINSON'S QUEENSLAND INC.
PROFIT & LOSS - OPERATING

-9-

Parkinson's Queensland Inc

Profit & Loss [With Last Year]

July 2015 To June 2016

	This Year	Last Year
Income		
Research Admin Fees	13,831	1,080
Advertising Income	3,665	4,440
Donation Income	71,911	93,674
Estate/Bequests Income	214,352	16,930
Grants Income - General	3,500	12,976
Fundraising Events Income	60,688	96,430
Membership Fees Income	26,139	31,442
Management Fee Income	11,133	34,404
Parkinson's Australia Reimbursement	0	442
Professional Development	530	3,480
Event Registration Fees	2,018	26,764
Seminars Registration Fees	3,979	21,154
SSCC - Recurrent	46,602	0
DOHA - Recurrent	40,666	120,200
DOHA - Auskey	15,000	0
DSS - Recurrent	81,335	0
HACC - Recurrent	0	45,297
Sponsorship For Events	26,750	24,682
Literature	459	544
Merchandise	0	968
Sundry Income	0	1,735
Total Income	623,458	536,052
Total Cost Of Sales	0	0
Gross Profit	623,458	536,052
Expenses		
General Expenses		
Accounting & Audit Fees	20,135	4,800
Advertising & Marketing	4,473	0
Bank Fees	311	289
Merchant Fees	1,035	1,429
Bank Tokens	45	0
Bookkeeping	8,373	14,300
Cleaning	1,271	909
Computer Expenses	10,105	15,503
Consulting Fees	8,153	0
Donations	425	66
Electricity	4,439	4,492
Event Expenses - General	12,215	0
Fines & Penalties	0	179
Fundraising Expenses - General	12,951	20,000
General Repairs & Maintenance	716	3,143
Internet Expenses	370	0
Legal Fees	52,057	10,968
Meeting Expenses	0	1,832
Parking/Tolls Expenses	338	586
Total General Expenses	137,416	78,507

Handwritten signature

PARKINSON'S QUEENSLAND INC.
PROFIT & LOSS - OPERATING CONT.

-10-

Pay Pal Fees	301	0
Postage	11,847	23,676
Printing	14,864	41,611
Promotional Expenses	0	5,544
Seminar Expenses	9,991	27,054
P.A. State Membership	915	0
P.A. Levy Expense	27,285	25,114
Resources & Information	13,996	1,956
Recruitment Expenses	40,184	3,620
Security Expenses	758	800
Stationery & Office Supplies	2,508	5,036
Subscriptions & Memberships	4,073	5,039
Support Group Expenses	0	1,033
Telephone Expenses	4,198	4,052
Travel & Accom. Expenses	8,888	4,392
Office Rental Expenses		
Office Rent	31,500	34,364
Maintenance - Lawns	82	0
Council Rates	4,745	6,075
Payroll Expenses		
Wages & Salaries Expenses	307,424	331,971
Work Cover Premiums	4,303	4,667
Staff Amenities	780	1,034
Staff Training Expenses	500	1,270
Staff Uniform	0	255
Superannuation Expense	25,458	28,456
Total Payroll Expenses	338,475	367,651
Depreciation Expenses		
Depreciation	16,243	22,802
Total Depreciation Expenses	16,243	22,802
Motor Vehicle Expenses		
Motor Vehicle Registration	319	356
Motor Vehicle Insurance	1,110	1,139
Motor Vehicle Fuel/Oil	707	2,550
Motor Vehicle Maintenance	41	174
Total Motor Vehicle Expenses	2,176	4,220
Insurance Expenses		
Business Insurance	3,895	3,675
Pro Indemnity Insurance	1,395	1,395
Total Insurance Expenses	5,290	5,070
Total Expenses	675,745	667,617
Operating Profit	(52,286)	(131,565)
Other Income		
Interest Income	9,862	12,379
Insurance Recoveries	19,889	0
Total Other Income	29,751	12,379
Other Expenses		
Loss on Disposal of Assets	0	503
Research Fund Profit Share	0	8,132
Fair Work Australia Claims	17,000	0
Prior Year Adjustment	3,269	0
Total Other Expenses	20,269	8,635
Net Profit/(Loss)	(42,804)	(127,821)

Handwritten signature



PARKINSON'S QUEENSLAND INC.
BALANCE SHEET - RESEARCH FUND

-11-

Parkinson's Queensland Research Fund

Balance Sheet [Last Year Analysis]

June 2016

	This Year	Last Year
Assets		
Current Assets		
Bank Accounts		
Research - 11274735 - S21	4,278	45,236
Research - 11274735 - I6	0	116,434
Research - 11274735 - I4	132,221	0
Research 11274735 - I5	122,779	0
Research 11274735 - I90	22,210	0
Total Bank Accounts	281,489	163,671
Total Current Assets	281,489	163,671
Non-Current Assets		
Office Equipment		
Office Equipment At Cost	6,700	6,700
Accum. Depr. Office Equipment	(1,675)	0
Total Office Equipment	5,025	6,700
Total Non-Current Assets	5,025	6,700
Total Assets	286,514	170,371
Liabilities		
Current Liabilities		
GST Liabilities		
GST Paid	0	(643)
Total GST Liabilities	0	(643)
Other Current Liabilities		
Provision - Admin Fees	310	2,047
Loan - Operating Account	(570)	0
Total Other Current Liabilities	(260)	2,047
Total Current Liabilities	(260)	1,405
Non-Current Liabilities		
Vera Maud Kendall Res Trust	41,691	41,691
Total Non-Current Liabilities	41,691	41,691
Total Liabilities	41,430	43,095
Net Assets	245,083	127,275
Equity		
Opening Bal Equity	1	1
Retained Earnings	127,274	124,956
Current Year Earnings	117,808	2,318
Total Equity	245,083	127,275

Handwritten signature

PARKINSON'S QUEENSLAND INC.
PROFIT & LOSS - RESEARCH FUND

-12-

Parkinson's Queensland Research Fund

Profit & Loss [With Last Year]

July 2015 To June 2016

	This Year	Last Year
Income		
Research Donations	3,865	6,721
Estate/Bequests Income	130,000	0
Interest Income		
Bank Account Interest	3	5
Term Deposit Interest	4,348	4,178
Total Interest Income	4,349	4,183
Fundraising	0	8,132
Total Income	138,314	19,036
Gross Profit	138,314	19,036
Expenses		
General Expenses		
Books and Publications	5,000	0
Research Grant Allocations	0	9,200
Total General Expenses	5,000	9,200
Depreciation Expense	1,675	0
Admin Fees - Research Fund	13,831	1,090
Total Expenses	20,506	10,290
Operating Profit	117,808	8,746
Total Other Income	0	0
Other Expenses		
Other Expense	0	6,428
Total Other Expenses	0	6,428
Net Profit/(Loss)	117,808	2,318

Handwritten signature



PARKINSONS QUEENSLAND INCORPORATED
CERTIFICATION STATEMENT BY MEMBERS OF THE COMMITTEE

The committee has determined that the association is not a reporting entity and that this special purpose financial report should be prepared in accordance with the accounting policies outline in Note 1 to the financial statements

In accordance with a resolution of the committee of Parkinson's Queensland Incorporated, the members of the committee declare that:

- The financial statements as set out on pages 3 to 12 present a true and fair view of the financial position of Parkinson's Queensland Incorporated as at 30th June 2016 and its performance for the year ended on that date in accordance with the accounting policies described in Note 1 to the financial statements and the requirements of the Associations Incorporation Act (Qld) 1981, and
- At the date of this statement, there are reasonable grounds to believe that Parkinson's Queensland Incorporated will be able to pay its debts as and when they fall due.

This statement is signed for and on behalf of the committee by:

President GEORGE MELUCE (Name) [Signature] Signature

Treasurer Karen O'Malley (Name) [Signature] Signature

Dated this 20 day of August 2016

GEORGE & RIDGWAY
PUBLIC ACCOUNTANTS
UNIT 2, 45 SANDERS STREET
UPPER MT GRAVATT Q 4122
PO BOX 610, SUNNYBANK Q 4109

Liability limited by a scheme approved under Professional Standards Legislation

[Handwritten signature]

Donations & Thank You

Parkinson's Queensland wishes to thank the following people who have made financial contributions to our work this financial year in the form of a donation. We thank you all for your ongoing support.

S.Adcock; J.Addley; E.Ainsworth; B.Aird; J.Allen; P.Allen; Anders; M.Anthonisz; L.Arthy; B.Askin; B.Bailey; M.Ballancin; C.Banner; C.Barney; E.Berwick; B.Betts; M. Bishay; G. & K. Bird; B. & L. Blime; L. & V. Bloom; K. Bonsey; J. Boothroyd; M. Bourboulas; H. Bourne; G. Bowgett; I. & M. Boyd; R. & L. Brace; M. Brady; S. Brauer; Brickworks; Brisbane City Council; R. Brix; B. & F. Brown; R. & J. Brown; J. Browne; C. Buchanan; Burdekin Support Group of Parkinson's QLD Inc; G. Bullpit; Bundaberg Support Group of Parkinson's QLD Inc; K. Burton; Y. & J. Burton; J. Butterfield; Caboolture Support Group of Parkinson's QLD Inc; L. Callow; M. Campbell; S. Campbell; S. Carlsson; A. Carrick; M. Cary; E. Cassimads; M. Challoner; J. Chesson; M. & P. Christopherson; Civil Aviation Safety Authority; A. Clark C. Clay; B. Coleman; J. & E. Coleman; M. Coleman; M. Coleman; T. & U. Comerford; N. Conn; E. Cragnolini; C. Crawford; B. Crisp; W. Curnow; L. Cutler; F. Dales; R. Dalla; C. D'Allura; K. & R. Dawson; C. & A. Day; DBM Consultants; J. Deardon; A. & G. Dempster; S. Denmead; P. Derbyshire; R. Derksen; P. Dillon; B. Dixon; L. & M. Dixon; L. Donnelly; L. Donovan; D. Dowling; B. & E. Crosby; R. Dunning; N. Duss; A. Edwards; F. Ellett; J. & W. Eric; G. & G. Evans; J. Everingham; Everyday Hero; T. Faccio; B. & J. Fermor; V. Flynn; J. & J. Ford; K. Fowden; L. Franks; I. Gambaro; R. Gambaro; Geebung/Zillmere Support Group of Parkinson's QLD Inc; K. Gillies; R. Godwin; F. Golding; J. Goodwin; G. Gould; R. & J. Gray; T. Green; Grill'd; M. Grogan; F. Hacon; A. Haigh; A. Hamilton; T. Hargreaves; D. Harrison; N. Hart; J. Hatch; G. & P. Haussman; S. Hellinga; R. & J. Henderson; L. Herron; H. Horne; K. Horne; P. Howson; M. Hunter; R. & M. Huston; A. Jahanbakhshzaden; P. & V. Jean; I. & A. Jackson; J. Monaghan; M. Johnston; A. Jones; B. Jones; M. Jones; M. Cones; S. & R. Jones; S. Jones; R. & M. Jorgensen; H. Jukes; M. Keay; W. Keith; A. Kennedy; B. & G. Keough; I. Kerr; A. Khan; J. & J. Kincade; R. Klein; S. Klein; P. Knight; M. Kroon; J. Kwong; J. Laffan; J. Lamont; J. Lawson; K. Lazarus; W. & R. Lee; B. Leong; G. Lewerissa; Lioness Club of Hervey Bay; S. Lippiatt; Logan Support Group of Parkinson's QLD Inc; Logan West Support Group of Parkinson's QLD Inc; L. MacPherson; Macquarie Group Foundation Limited; L. Maczuga; H. Magill; J. Magill; S. Markey; A. Martin; M. Mason; R & S Mason; G. Mathiou; D. McAllister; McClelland; I.D & M.J McCubbin; McKenzie; D. McLarty; G. McVeigh; S. McCafferty; J. & M. McCahill; J. McIntyre; B. & G. McKay; B. McQuillan; V. Meier; J. Miller; B. Millerd; R. Milton; L. Moltzen; A. & J. Morgan; M. & A. Morris; P. Morris; D. Morrison; O. Mosun; Mount Gravatt Support Group of Parkinson's QLD Inc; K. & M. Moxley; J. Murphy; M. & B. Murphy; P. Murphy; B. Murray; My Cause Gift Fund; Mystic Sands Golf Club; Mystic Sands Veteran Golfers; P. Nash; D. Neall; J. Neech; R. Neilson; T. Newell; T. Newnham; V. Ng; M. O'Keefe; L. Orman; Outback Win Chin; Outdoor Pressure Wash Services Pty Ltd; P. & G. Papalexiou; M. Park; D. & E. Patrikios; Paw Club; J. Penny; T. Penman; R. Petersen; N. Peterson; W. Pettigrew; K. Pierre; D. Pimmada; G. Pink; R. Polke; S. Potchecary; J. Potter; M. Pow; E. Price; M. Price; G. Price; PT Pty Ltd; L. Purcell; A. Purnell; M. Quilty; C. Quinn; N. Rattazzo; J. Rayward; V. Renouf; F. Richardson; J. & M. Robba; B. Robins; R. & J. Robinson; A. Roche; M. Rodgers; C. Rogers; M. Rogers; J. & C. Ruffle; K. Russ; K. Russel; D. Russo; F. Ryder; J. Schilling; K. Scholtes; D. Schreiber; D. Schubert; M. Schultz; J. Shaxson; Shepherdson and Boyd (QLD) Pty Ltd; A. & R. Shorthouse; F. Sideris; M. & M. Sideris; G. Sideris; P. & E. Singh; J. Slingsby; B. & T. Smith; S. Sorensen; J. Spicer; St Joseph's Primary School; C. Stacy; M. Staib; J. & Z. Stathis; R. Stephenson; N. Stevens; P. Stevens; E. Stewart; G. Swanson; H. & J. Swarbrick; N. & N. Swift; A.W. Tanius; M. Taylor; The Ginger Jar PR; The Morgans Foundation; The Pharmacy Guild of Australia-Queensland Branch; P. Thie; L. Thompson; P. Thorp; C. Tierney; J. Todd; J. Todd; G. G. Tomkins; S. Tomley; M. & R. Townsend; Townsville Support Group of Parkinson's QLD Inc; Toyota Landcruiser Club (Qld) Inc; J. Travers; D. Trestrail; J. Trewin; R. & S. Trott; H. Tyson; C. Ufer; Unknown; B. Viclers; P. Vidler; B. & J. Vincent; S. & A. Voss; J. Wanstall; C. Webster; A. White; P. Whitlock; A. Whittingham; J. Williams; N. Wise; J. Wood; J. Wright; M. Yardley; N. & P. Yates.



THE TULIP

The petals of the tulip are symmetrically divided to represent the two sides of the brain

In 2016 and beyond, Parkinson's Queensland aims to expand the reach of the organisation to assist more people with Parkinson's in the State, to fund research, and services.

in loving memory

Parkinson's Queensland wishes to acknowledge the donations which have been given by families and friends in memory of the following people who passed away this year. The thoughtfulness of the families arranging for donations to be given to Parkinson's Queensland is greatly appreciated.

Gregory Bloink	George Gatt	Dick May	Mark Richard
Reno Bongioletti	Pat Graham	Hilary McIntyre	Ian Rohl
Kevin Brian Byrne	Tom Grogan	Melville Leslie McKewen	Jill Roughan
Ron Chan	Williamina Ann Hamilton	Pauline Mead	Glenda Shaw
Edward W.B. Clarke	Allan "Barry" Hooper	Joan Doris Millers	George Sideris
Marie Clair Clarke	Edward James Kelly	Stanley Mote	Phyllis Sticher
Cedric Davies	John Leigh	Cliff Neil	Max Thompson
Adrianne Dempster	Jack Longden	Keith Perry	Ray Townsend
Nunzio Donvito	Judy Maltby	Margaret Ann Pilcher	Selwyn John Tully
Eunice Evans	Vincenza Mastroianni	John Price	Elizabeth Tyson
Lionel Farmer	Jock Mackenzie	Margaret Raines	Dorothy Underwood
			Lyn Watts

YOUR SUPPORT WILL MAKE A DIFFERENCE

Your ongoing support is vital for us to continue to assist the lives of the 17,000 people with Parkinson's in Queensland. Without donations from the community, our message will not reach all of the corners of our State.

Every dollar counts towards our mission to provide communities that are responsive to the needs of people with Parkinson's. Your donation funds our ongoing research, our support and referral services, publications and fact sheets, our library and resource centre, forums and seminars for people with Parkinsons and health professionals, and provides our free call number, just to name a few.

Please give generously in support of all people affected by Parkinson's. You never know how many lives you can change with your thoughtful donation.

For more information, please call our office, or fill out the form below and return to us at PO Box 1684, Springwood, QLD, 4127 or by email on development@parkinsons-qld.org.au

BEQUESTS

Bequests are a private affair, a decision that may be known only to yourself and your solicitor. Bequests allow you to give back to a group or organisation that has helped you, but you are unable to thank financially while you are alive.

Parkinson's Queensland would like to have the opportunity to thank you for your bequest, so if this is in your plan, consider letting us know so that we can pass on our appreciation. This can be done privately if you wish.

Bequests will assist in our ongoing work to continue supporting and improving the lives of people with Parkinson's for many years to come.

If you would like more information on leaving a bequest or gift in your will, please contact Parkinson's Queensland on 1800 644 189.

Donation Form - Thank you for supporting us as we all make a difference together.

Title: (please circle)
Mr / Mrs / Ms / Miss / Dr / Prof.

First Name:

Surname:

Address:

Post Code:

Telephone:

Mobile:

Email Address:

Payment Details:

☐ Please add me to your mailing list

☐ I would like to donate via cheque (enclosed) - Amount \$ _____

☐ I would like to donate via credit card - please charge my card as per details below:

☐ \$100 ☐ \$50 ☐ \$25 ☐ Other \$ _____

☐ One time only ☐ Every month ☐ Every three months

Card Type: ☐ Visa ☐ MasterCard

Name on Card:

Expiry Date:

Card Number:

Signature:

☐ I would like to donate via EFT and have transferred the following amount to the Parkinson's Queensland bank account listed below ☐ \$100 ☐ \$50 ☐ \$25 ☐ Other \$ _____

Account Name: Parkinson's Queensland Inc.

BSB: 638 - 070

Account Number: 1127 4727

Reference: Please use your name.

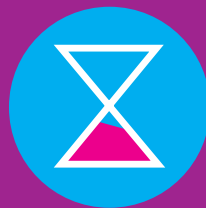
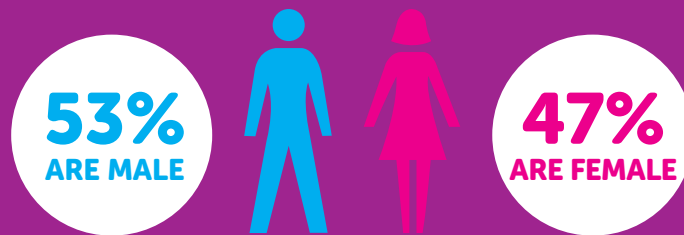
☐ I would like more information about how I can remember Parkinson's Queensland in my will.

☐ This donation is made in honour of (please provide a name) _____



Facts About Parkinson's

Parkinson's disease is the second most common neurological condition in Australia but remains one of the least understood.



Someone in Australia is diagnosed with Parkinson's every 47 minutes.



The total economic cost of Parkinson's is around \$9.9 billion p.a.



Source: Deloitte Access Economics 2014/2015

Parkinson's Queensland Inc

ABN 69 838 771 233

Unit 2/25 Watland Street Springwood QLD 4127

FreeCall: 1800 644 189 • Tel: 07 3209 1588 • Fax: 07 3209 1566

Email: pqi@parkinsons-qld.org.au • Web: www.parkinsonsons-qld.org.au